

Build profitable primary relationships with ClickSWITCH

Acquiring new users is tough, time-consuming, and expensive. Fintechs need to increase deposits and engagement early in the relationship.

ClickSWITCH smoothes the path to establishing primary relationships with your users, ensuring a steady flow of deposits to fund debit card spending which will generate interchange. We automate the process for switching direct deposits and recurring payments to your organization, making it quick and easy to complete. It's simple, saves your users time and hassle, and helps you **grow revenue and overall engagement**.

A convenient way to migrate direct deposits and recurring transactions

For end users, the switching process takes as little as ten minutes.

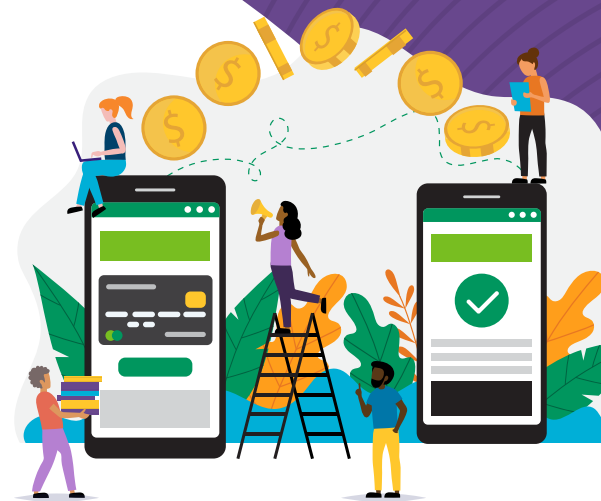
It's as simple as:

- 1** Access **ClickSWITCH**

- 2** Search for an employer

- 3** Submit the switch.


When the switch is complete, **ClickSWITCH** can even initiate the closure of the legacy account, consolidating the user's finances and ensuring that you're their primary relationship.





A quick, complete process for account switching

With a simple but feature-rich user experience, **ClickSWITCH** ensures that nothing slips through the cracks when onboarding or re-engaging your card holders:

- **ClickSWITCH** integrates via APIs or SSO.
- It's easy to set up and provides an admin portal to help you track all **ClickSWITCH** activity and create reports.
- Auto-population helps users speed through the process and avoid errors.
- Switch Status gives users a detailed view of all switches in progress.
- Fast implementation, including available training, makes it possible to get your users up and switching in as little as 30 days.
- **ClickSWITCH** can be used as a white label product — or you can build against our APIs to create your own experience account switching.
- It's really as quick and easy as clicking on a payee or biller. **ClickSWITCH** takes care of the rest.

ClickSWITCH's benefits

For fintechs

- Increase direct deposits
- Gain more primary relationships
- Re-engage with inactive users

For users

- Simplified viewing of activity all in one place
- Migration of legacy accounts instead of closure

To learn more or schedule a demo, visit ClickSWITCH.com.